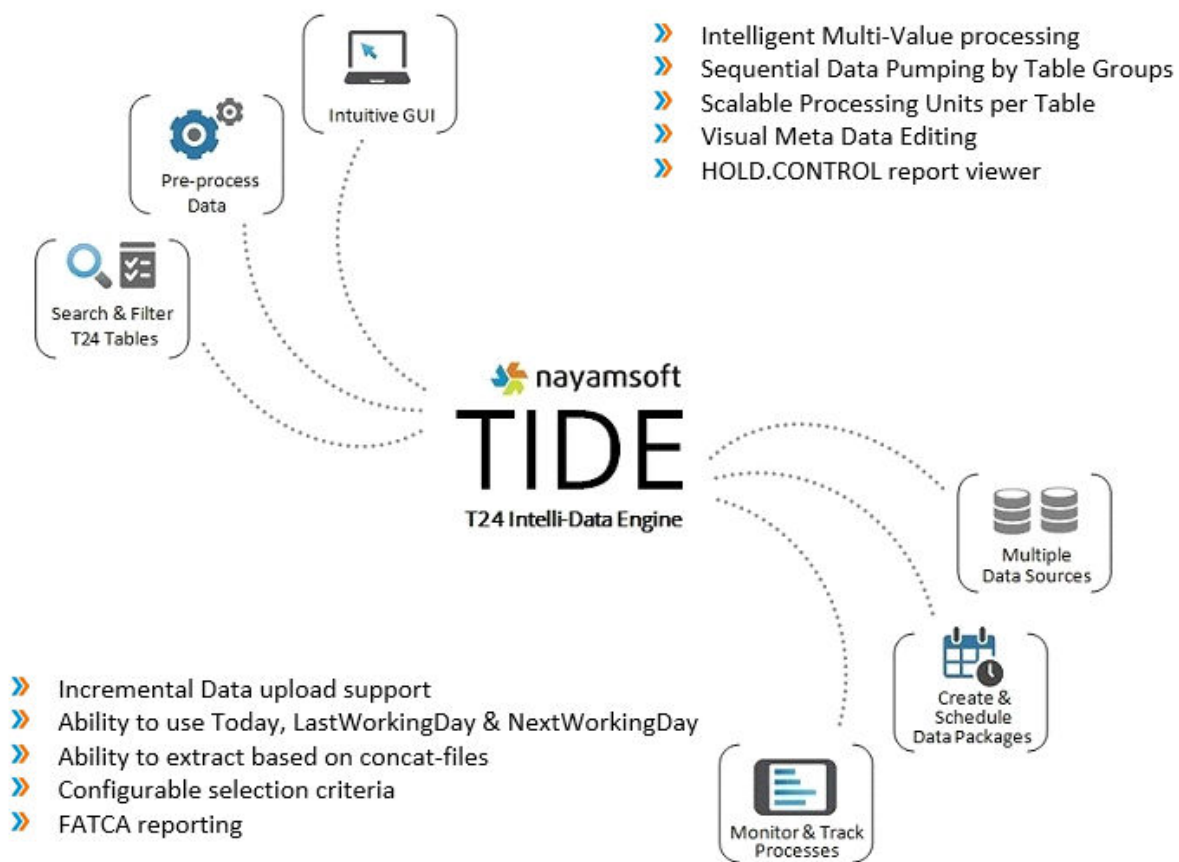


TIDE is a native T24 ETL solution from Nayamsoft. It features the fastest ODBC driver in which can communicate to T24 natively. Comprehensive multi-value handling, meta data modification, efficient load handling are the key features of TIDE. An **exclusive ODBC access to T24** via our unique ODBC driver is available for third party applications. T24 xml data can be **extracted directly from T24 xml oracle database** and exported as relational database. External systems can execute extraction packages remotely using **TIDE Client API**.

FATCA Report files can be generated on the fly using in-built FATCA reporting feature.

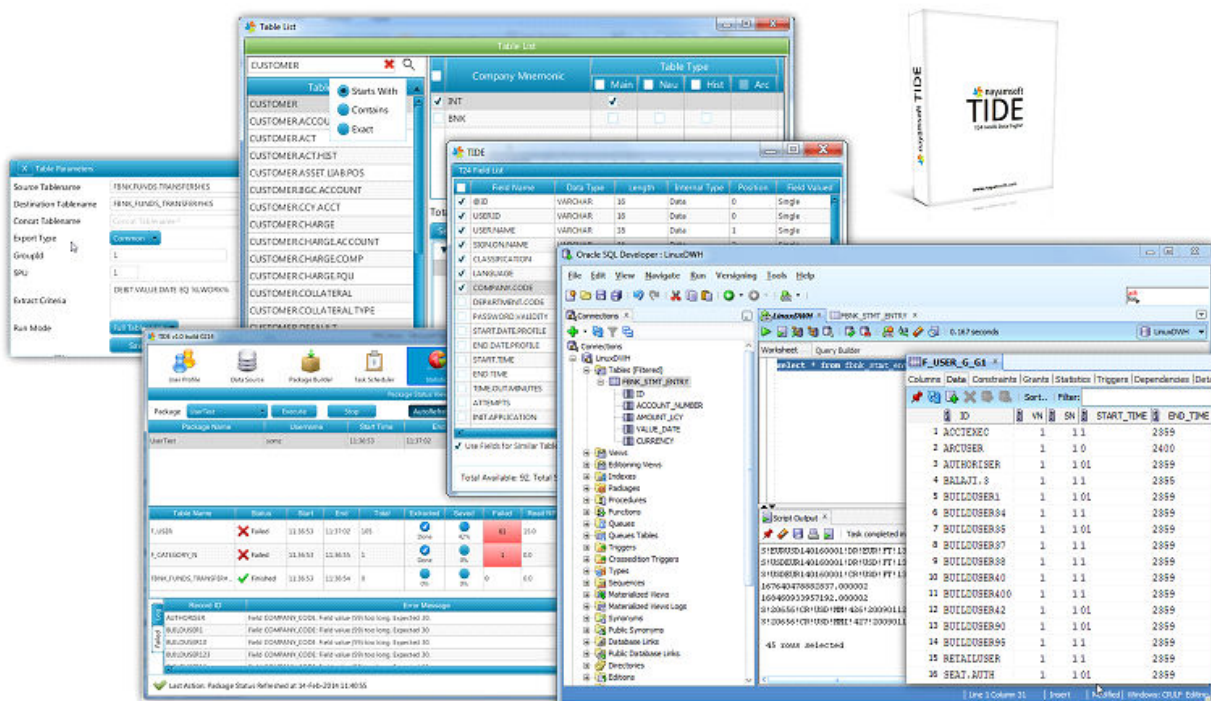


T24 Tables will be listed with their meta-data information and the data export package can be prepared with complex selection conditions. Flexible data filters are available to export unique data. No T24 services (TSA.SERVICE) are required to run and the information will be directly extracted by TIDE driver. Enhanced Meta-Data Viewer helps in analyzing the data properties prior to building extraction packages.

Multi-Value information can be stored as separate tables, separate group of table or all multi-values of a table can be kept in one table. Thus providing the most possible solution to export the T24 data into relational database format.

Sequencing of data pumping can be done for group of tables to export the data with related information. Dependent tables can be uploaded in order thus avoiding inconsistent data in the DW database. Select from a simple set of conditions as 'What-Next' in case of errors during extraction or conversion.

Package Builder helps to create from simple to complex extraction package definition. Multiple tables can be grouped to be extracted with selected list of fields with specific field properties. Start, Stop, Monitor and Cancel package execution from unified user interface.

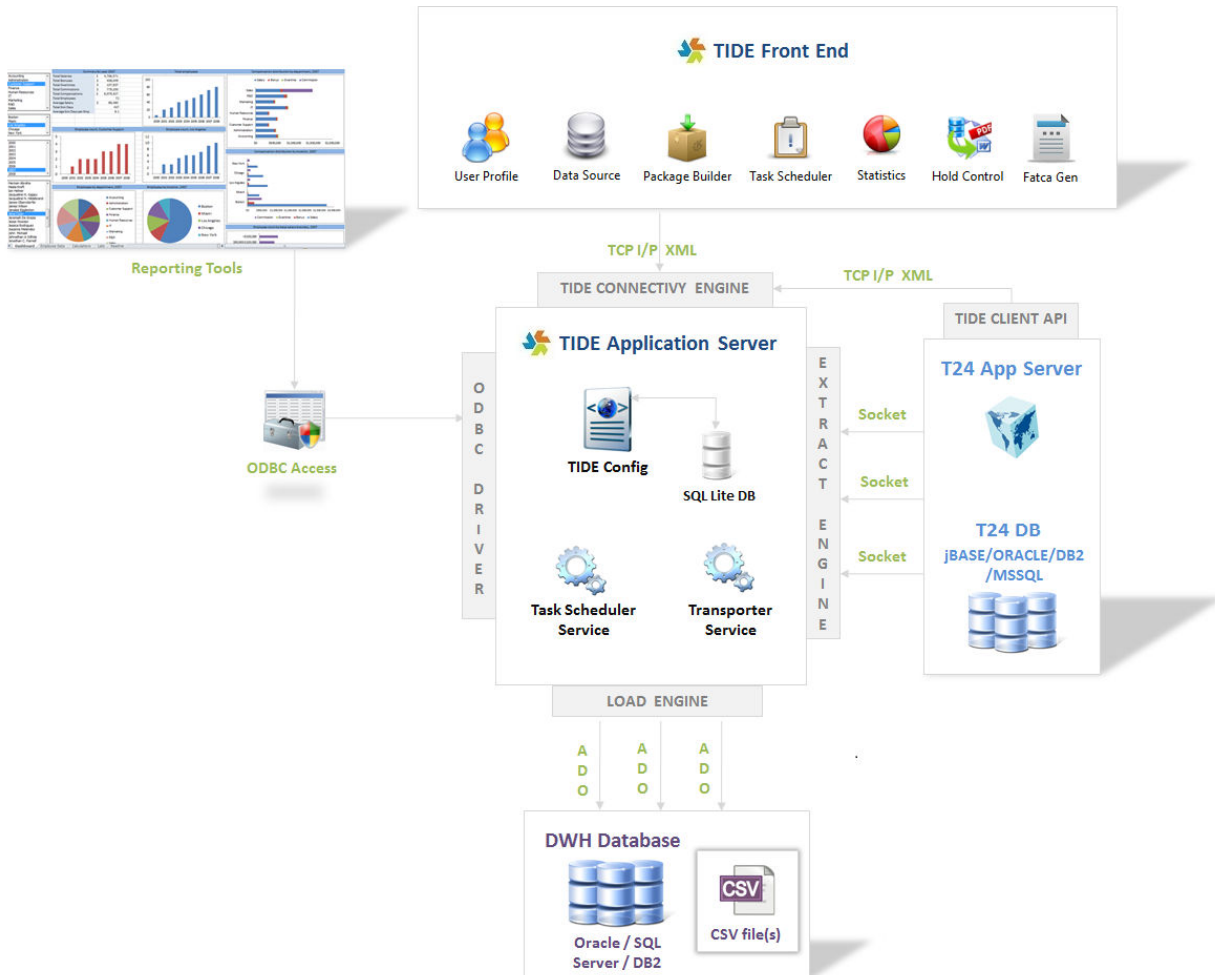


Scalable processing units feature in the driver helps to scale up or down the processing units depending on the load of the data. Number of processing units can be defined per table depending on the hardware capability of the server. This unique feature provides the opportunity to make maximum use of the hardware resources available in the server.

Monitoring of the running packages are shown graphically with the estimated remaining processes and the current execution / extraction status information. Number of records processed per extraction are also available to track.

Exporting data to Oracle, DB2 and Microsoft SQL Server systems are supported.

HOLD CONTROL reports can be extracted and viewed from the RDBMS.

Tide Architecture


CSV Extraction feature is available to extract T24 table data into comma separated valued text files, for the systems that support only file upload.

Email Alerts will be sent to package owners with the statistics of the package execution.

TIDE Client API is available to make package execution requests from T24 or any other third party DWH systems. This helps to kick start the ETL process after COB completion for T24 or if any third party DWH system wants to initiate ETL process in TIDE remotely.