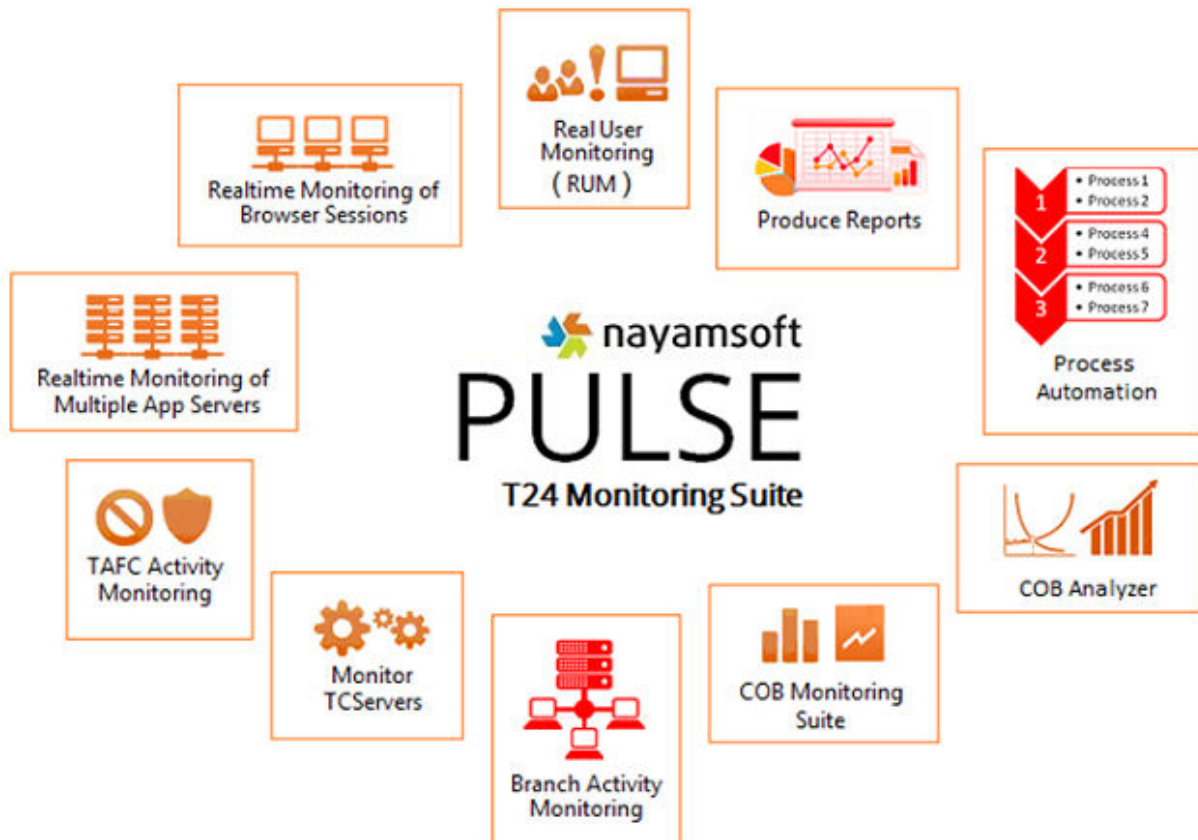
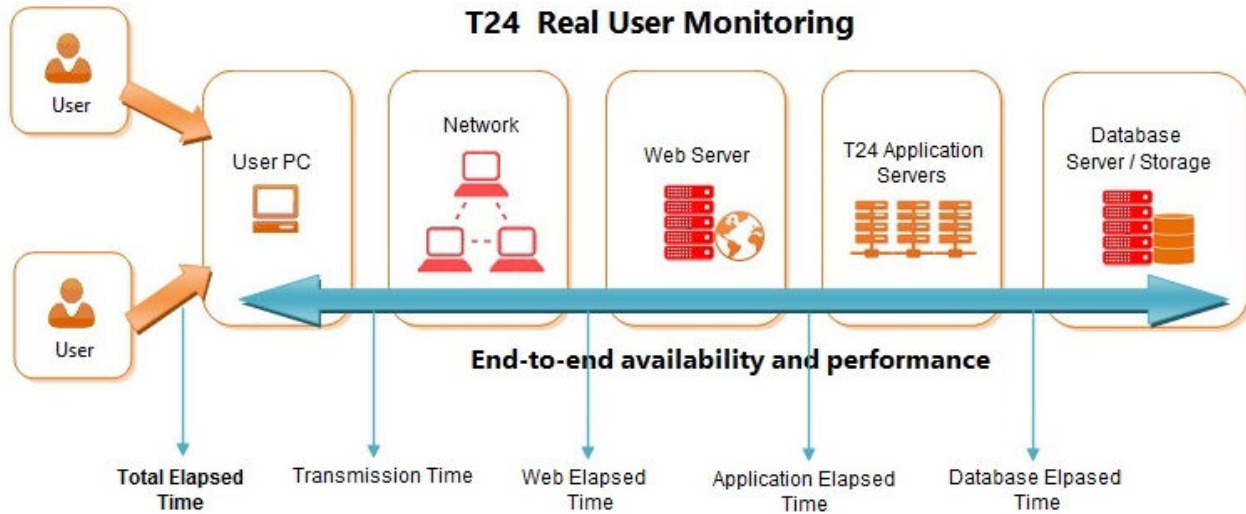


PULSE is a comprehensive monitoring solution for T24 from Nayamsoft. It features a rich dashboard that provides a 360° view of T24 enterprise systems in a single console with a secure connectivity framework. T24 activities and processes happening in the entire T24 eco-system are monitored real time and tracked. **An exclusive Real User Monitoring (RUM) functionality is available to measure the End User Experience in T24 Browser.**

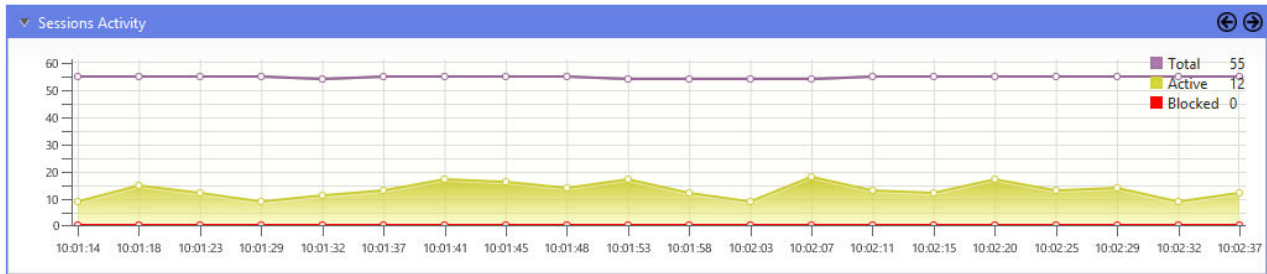


Real User Monitoring (RUM) is a passive monitoring technology that records all user interaction with T24 Browser. Monitoring actual user interaction with T24 Browser is important for operators to determine if users are being served quickly, error free and if not which part of a business process is failing.

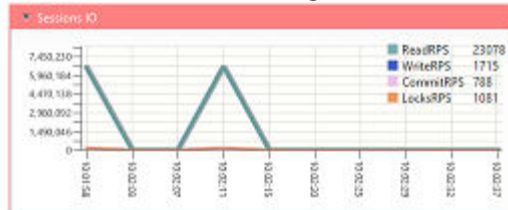
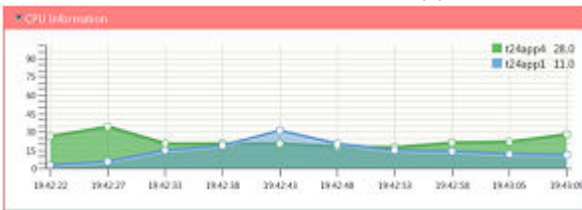
Pulse Real user monitoring monitors all major T24 components across all 3 layers (web,T24 and DB) and gives insight on performance issues, bottlenecks, avg elapsed time, deviations and IO information for each request sent from users PC. So Pulse monitors the request starting point until it comes back to the client. Data are stored in a database for further analysis and producing reports. These data can be utilised to data mining to understand the pattern of the whole T24 environment performance in production.



Realtime Monitoring of Browser & ARC-IB sessions are done graphically. Current T24 sessions activity details are tracked in detail with information like User ID, Branch code, Version name, IP Address, etc.



Multiple T24 application servers can be monitored together with their Hardware utilisation statistics and details. Entire T24 traffic handled via all applications servers are monitored from a single console.



T24 User Licenses and active sessions are monitored graphically to track the maximum load in the system.

Top5 Transaction Metrics provides the highly utilised T24 processes in groups and in order.



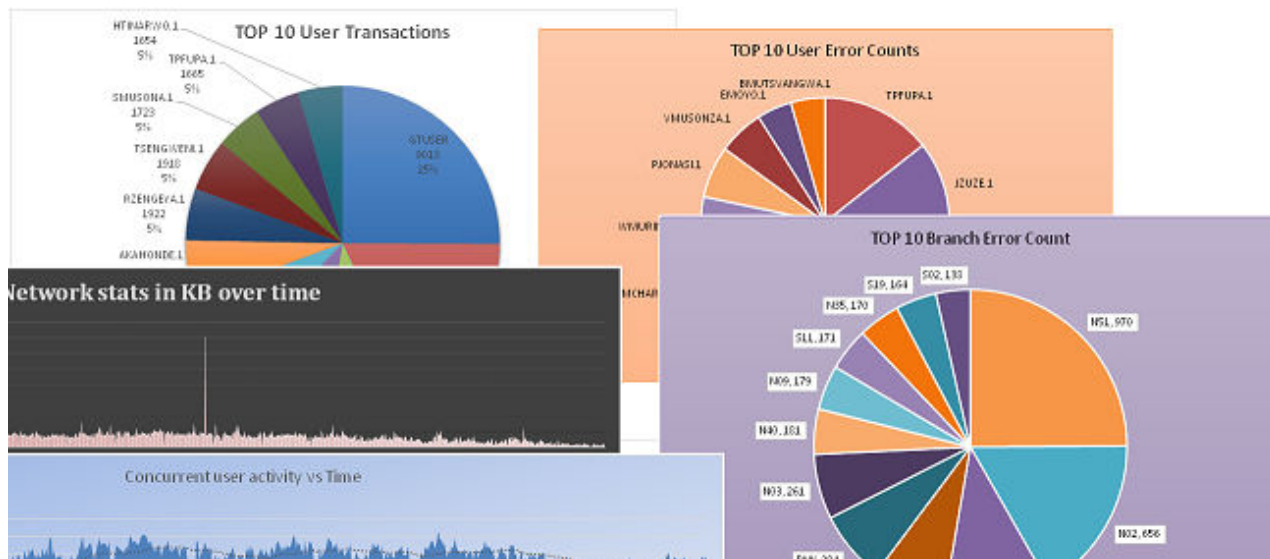
Realtime I/O statistics are provided with current T AFC processes information.

Host	Process	Read Count	Write Count	Open Count	Delete Count	Memory	Commit Count	Lock Count	Total Procs
10.1.9.30	JSH	323	-24	-24	0	0	6	0	5
10.1.9.30	TSM	5744	12	0	0	0	0	1640	1
10.1.9.30	JBASE_AGENT	152540	0	682	0	0	395	0	2
10.1.9.30	TSA	2764262	124030	57771	118266	0	64349	276035	4
10.1.9.30	MW42	204242	-2189	-2552	-758	0	-486	-2124	1
10.1.9.30	Agent_Thread	44372	3202	3829	1142	0	733	3379	2
10.1.9.30	/T24/T24UVE/BANK/BKCR...	630828	15799	21565	8554	0	3651	11924	560
10.1.9.30	BBPHANTOMPH	185508	8162	81434	-136	0	16371	7980	1
10.1.9.30	SSELECT	5808	-89	-56	39	0	-7	-41	1
10.1.9.34	EX	1702736	58896	-214	-58	0	-122	5284	1
10.1.9.34	JVM EXAM MONET	8885	-14180	8	8	0	3	-18	6

Branch Monitor provides status of the branches that are Active, Idlo and No-contact made since the monitoring is started. Thus helping troubleshooting of remote branches connectivity.

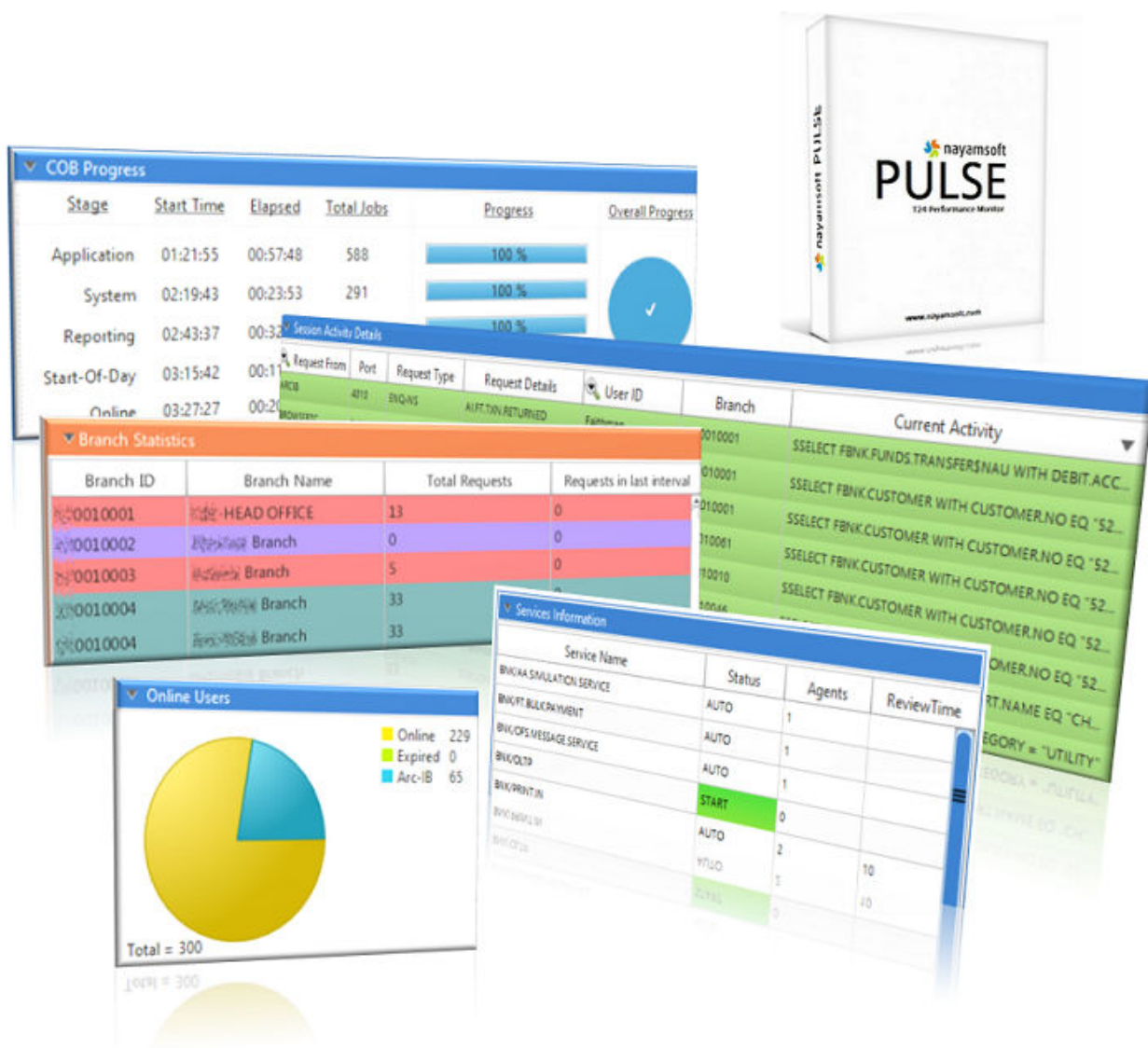
T AFC Monitor provides the jshell activity audit log with the jbase error information.

Reporting of User activity details with the Transactional, Erroneous, High reads. High writes & much more combination of activities can be done using the captured data.



COB Monitoring Suite provides 360° wholesome view to the COB process with complete visibility to all different activities involved in it.

- COB Dashboard & Metrics
- Running Jobs panel
- Stagewise Jobs split
- TSA Services panel
- TSA Agents panel
- Individual Jobs information
- Bad Performing Reports information
- COB Errors information
- COB Comparisons
- Current & Next job predictions
- TSA services & Phantoms monitoring
- Agents Status information
- XML Driver request information



Complete set of all possible information related to COB is captured and shown in PULSE thus helping users to monitor and track COB progress and performance at the same time. It also helps to predict possible problems that might occur by comparing previous COB information.

PULSE Key Benefits Summary
Real time Monitoring GUI:

- » Real time monitoring of T24 metrics likes sessions, IO, locks, etc
- » Monitoring user activity from all channels (Branch, ATM, mobile, Internet etc)
- » Monitoring OS level metrics
- » Monitoring third party software like jBoss, Oracle, Websphere MQ using JMX plugin
- » Supports Integration with any enterprise monitoring products like NAGIOS.
- » Branch activity monitoring
- » Performance monitoring which gives insight on T24 and other architecture components bottleneck
- » T24 components monitoring and control
- » Light weight listeners, all metrics are updated in memory mapped files
- » Monitoring incoming SWIFT messages and alerting
- » End-to-End request monitoring for T24 Browser activity
- » Gives in-depth details on Job performance and overall COB performance
- » Monitors entire architecture not just T24 alone

COB Monitoring

- » Live COB progress monitoring
- » Monitor Agents, Job lists and compare with previous COB job timings
- » Real time COMO update
- » COB Errors, Stage wise & Branchwise progress update

IT activity Monitoring & control

- » Changes to TAFC/Oracle records
- » jShell Access audit log
- » Low-level modification using JED
- » Application configuration change
- » User permission changes
- » IT activity history
- » Access Control setup for low level JSH Access
- » Sensitive data protection from JSH (Customer names, address etc)

Business activity Monitoring & control

- » T24 application access (audit)
- » Critical T24 user actions and unexpected modifications
- » Record access including customer accounts, fund transfers, etc.
- » Changes to records including customer accounts, loans, etc.
- » Viewing of restricted accounts, Staff accounts
- » User activities history and forensics
- » Branch level transaction monitoring
- » User erroneous activity monitoring
- » Security vulnerability monitoring (user account access)
- » Unusual T24 user behaviors

Reporting

- » Produce branch level KPI charts using captured user data
- » Track and Trace user productivity